

ThingPark IoT Solutions



Workspace Management

The turnkey IoT solution to monitor your work areas 24/7.

This IoT Workspace Management Solution allows to **simultaneously** monitor **indoor environment** (temperature, humidity, light), **personnel presence** for real-time monitoring of staff interventions, and **directional people counting** (left-right). It allows **cleaning based on real-time usage data**, and improves the **productivity of the entire team organization, reducing operational spending and optimizing business outcomes**. This evaluation Starter Kit provides you with the required hardware, software and connectivity **to assess this integrated plug-and-play solution**.

skiplly

 ELSYS.se

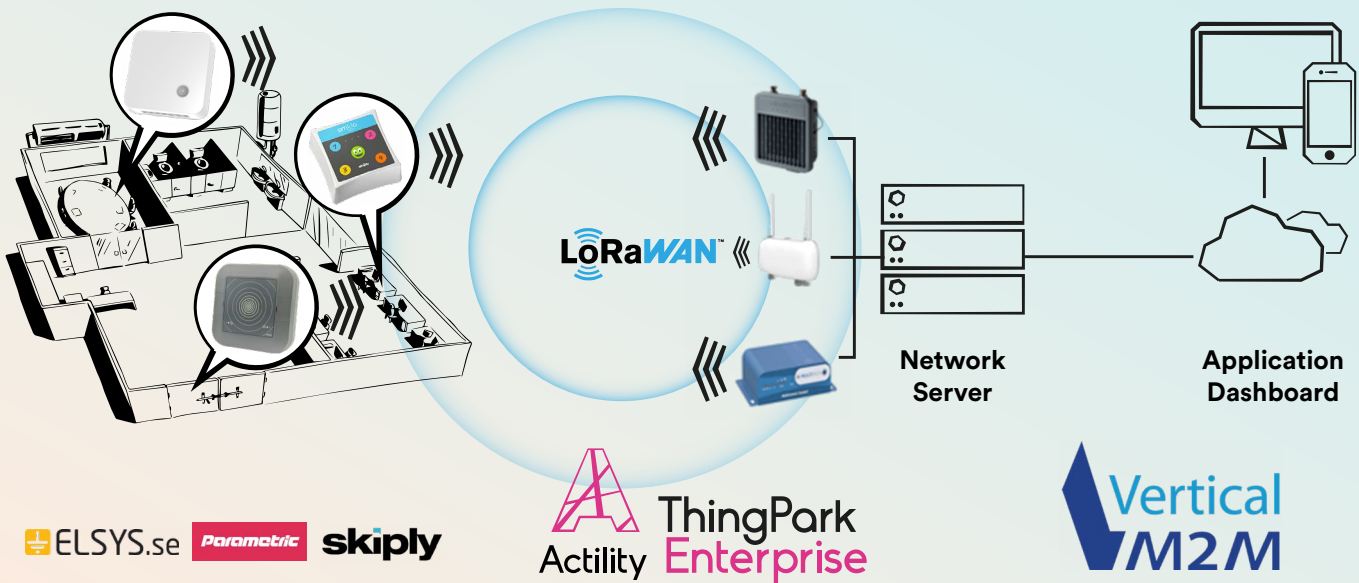
Parametric

 Vertical M2M



Activity

Automate the monitoring of your workspace with LoRaWAN® to ensure occupant's productivity and wellbeing!

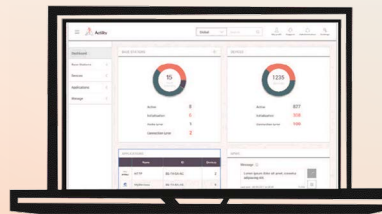


IoT sensors by ELSYS.se, Skiplly and Parametric



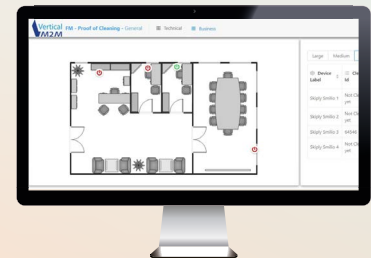
ELSYS ERS device measures temperature, humidity, light and presence of an indoor environment. The Skiplly Smilio A allows reporting service personnel presence using magnetic cards. Parametric PCR2 sensor allowing people flow monitoring with directional counting (left/right), mounted sideways or overhead to detect people passing by.

ThingPark Enterprise LoRaWAN® connectivity infrastructure by Activity



Dependable connectivity infrastructure with a proficient UX to easily build a LoRaWAN® network, Cloud-based or On Premises, using pre-integrated high-end Base Stations & an advanced Activity Network Server with dashboards providing key operational insights on the network & alarm management.

CommonSense IoT Platform for data processing and analysis by Vertical M2M



CommonSense IoT platform® is the device management and application generation platform comprising all the building blocks necessary to deliver IoT projects from end to end: rapid integration of IoT sensors and equipment, advanced management of your fleet of devices and immediate access to applications.



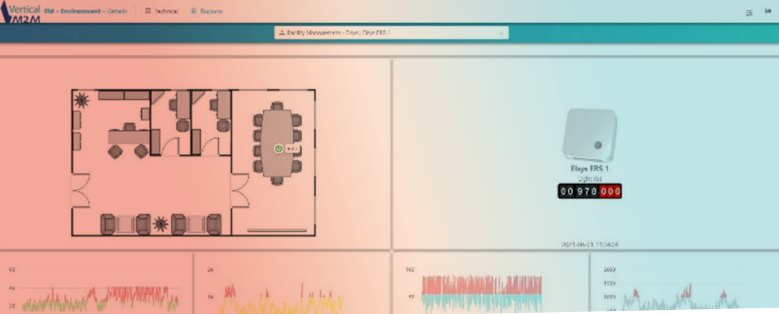
Monitor of real floor / rooms utilization to increase or downsize offices and reallocate unused areas.



Get real-time and historical monitoring of temperature, humidity, light and motion detection to improve working conditions and kill useless energy consumption costs.



Get an eye on cleaning data and workers real-time presence and to improve conditions of work and adapt human resources size.



Key features:



Interoperability: all devices are pre-integrated with Activity Application dashboard for simple decoding and encoding services.



Adaptability: Clients can visualize, edit and add their own notification conditions and rules for immediate data processing and enable additional client autonomy.



Low-Power: Leverage LoRaWAN® technology, optimize assets energy consumption and lower your operational costs



Easy usage: Available as on-premises & cloud-based application. Manage your installation from one single application dashboard with easy accessibility, usability, management & control.



Data-driven management: Automated compliance reports and configurable alert notifications are sent via SMS or email for the service personnel to take required corrective action, like enabling ventilation flow in the designated area.

Use cases:

This end-to-end IoT Solution enables a workspace solution by monitoring, measuring, recording, and alerting on real-time control systems readings, allowing you to act quickly to save operational costs and protect your clients and consumers and improve wellbeing and efficiency of occupants. It can be used for any indoor space: **offices, meeting rooms, shops, industrial facilities, public buildings, classrooms**, and much more. Rather than cleaning a room each hour duly, act on real-time usage data and pre-set thresholds. The application dashboard enables a cockpit navigation panel to navigate within a Facility Management dashboard - between workspace occupancy, environmental monitoring and proof of cleaning.



Build your IoT Solution with us!

Get your starter kit on ThingPark Market, or contact Activity to learn more

